

£115 Per Person Per Week

Beamsley Place, Leeds LS6 1JZ

Terraced House | 2 Bedrooms | 1 Bathroom

01132442443



www.samarahomes.co.uk



Step Inside

Key Features

- Available for 24/25
Academic Year

Property Description

Property Ref: 7 BP POPULAR LOCATION- HYDE PARK- STUDENT NEIGHBOURHOOD- TWO SPACIOUS BEDROOMS- CALL TODAY FOR MORE INFO! A well presented back to back house, situated in the hotspot of Headingley. The property comprises of a spacious lounge and separate fully fitted kitchen with washing machine on the ground floor.

Main Particulars

Property reference: 7 BP

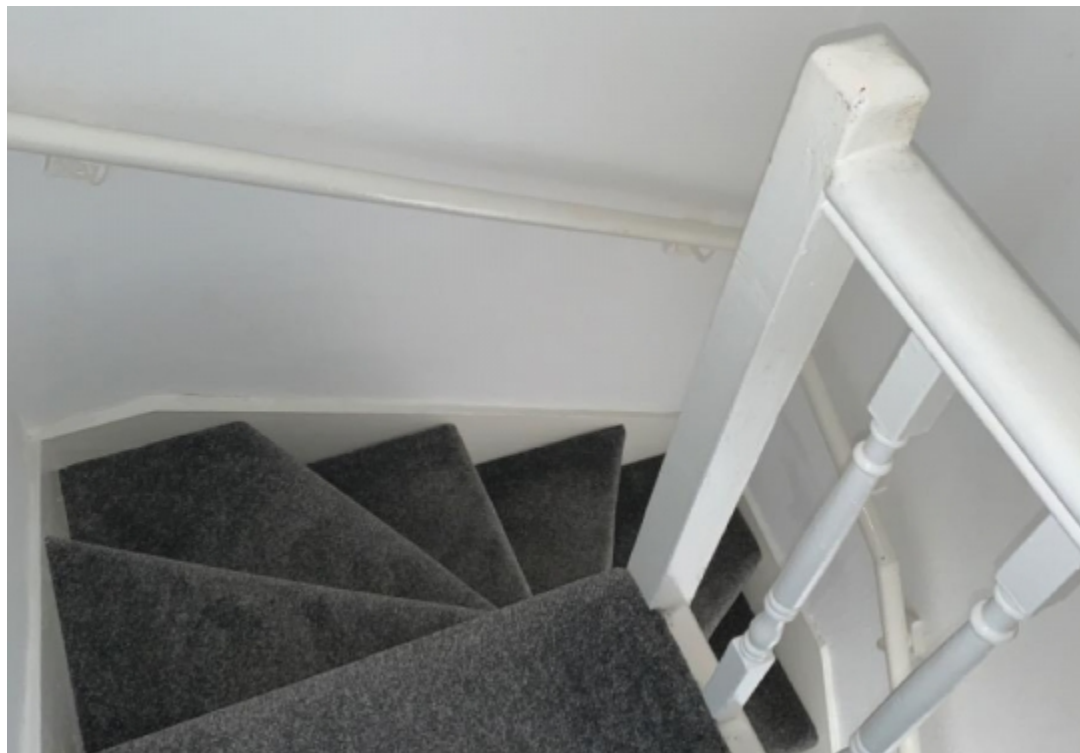
- Short walking distance to the University of Leeds.
- Surrounded by several shops, restaurants and bars.
- Early viewings are recommended!

This 2 bedroom property briefly compromises of a fully fitted kitchen equipt with a washing machine and separate living room. There are 2 bedrooms, each on their own floor, which are fully furnished with a double bed, wardrobe and desk with chair. Finally, there is a fully tiled bathroom with a shower.

Other features of this property include central heating and double-glazed windows.

This property is priced at £115 per person per week, making the full rental amount £999.42 per calendar month. It is not inclusive of any bills.

*Please note all photos are a representation of the property, and viewing is required to see the exact layout and size.



Telephone: 01132442443



www.samarahomes.co.uk