



£136 Per Person Per Week

Cromer Terrace, Leeds LS2 9JU

Apartment | 6 Bedrooms | 2 Bathrooms

01132442443



www.samarahomes.co.uk



Step Inside

Key Features

- Available for 24/25 Academic Year
- Large Property over three floors
- All-Inclusive option
- Complimentary Wi-Fi

Property Description

Property Ref: 35 CT TF A rare opportunity for this spacious six bed property, spread across two floors located on the University of Leeds Campus has become available. Properties of this size and location are very popular, thus early viewings are recommended.

Main Particulars

Property reference: 35 CT TF

- Newly refurbished and modern.
- Directly on the University Campus.
- Surrounded by several shops, restaurants and bars.
- Early viewings are recommended!

This 6 bedroom property briefly comprises of an open plan fully fitted kitchen equipped with a washing machine, as well as a spacious separate lounge area with a dining table. There are 6 double bedrooms, each fully furnished with a double bed, wardrobe and desk with chair. Finally, there are 2 fully tiled bathrooms with showers.

Other features of this property include central heating and double-glazed windows.

This property is priced at £136 per person per week, making the full rental amount £3,536.00 per calendar month. It is inclusive of gas, water, electricity and complimentary Wi-Fi.

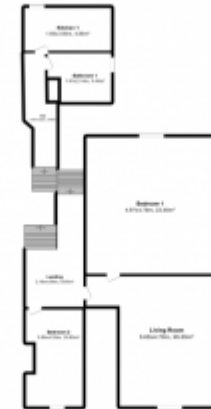
*Please note all photos are a representation of the property, and viewing is required to see the exact layout and size.





The provider and/or software owner gives NO guarantee in relation to layout or measurement accuracy of this floorplan and by using it, you accept full liability for any errors, omissions or inaccuracies.

Ground Floor



The provider and/or software owner gives NO guarantee in relation to layout or measurement accuracy of this floorplan and by using it, you accept full liability for any errors, omissions or inaccuracies.

First Floor

This floorplan is for illustrative purposes only and the location of doors, windows and other items are approximate.

Agents notes: All measurements are approximate and for general guidance only and whilst every attempt has been made to ensure accuracy, they must not be relied on. The fixtures, fittings and appliances referred to have not been tested and therefore no guarantee can be given that they are in working order. Internal photographs are reproduced for general information and it must not be inferred that any item shown is included with the property. Copyright © 2024 10078620 Registered Office: , 207 Clarendon Road LS2 9DU

Telephone: 01132442443



www.samarahomes.co.uk